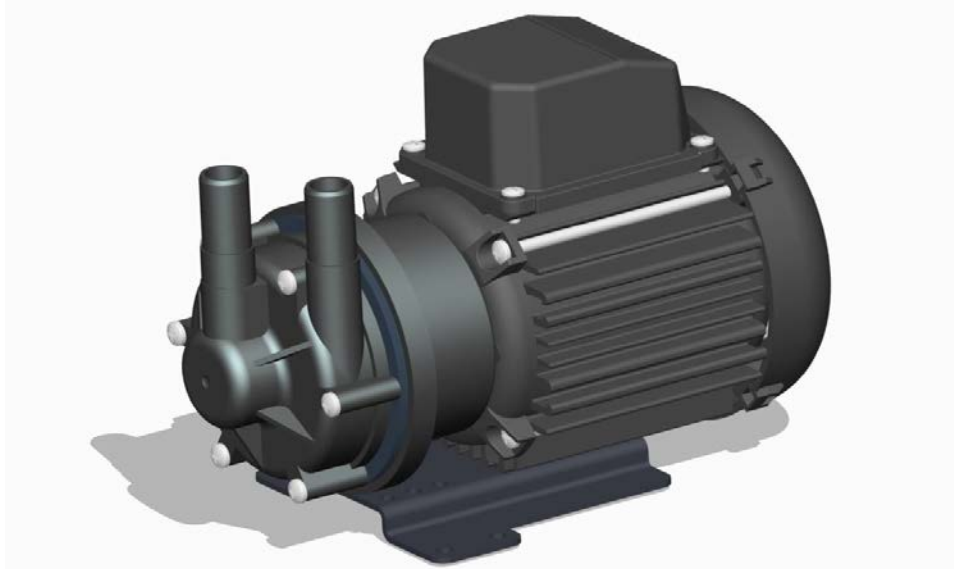
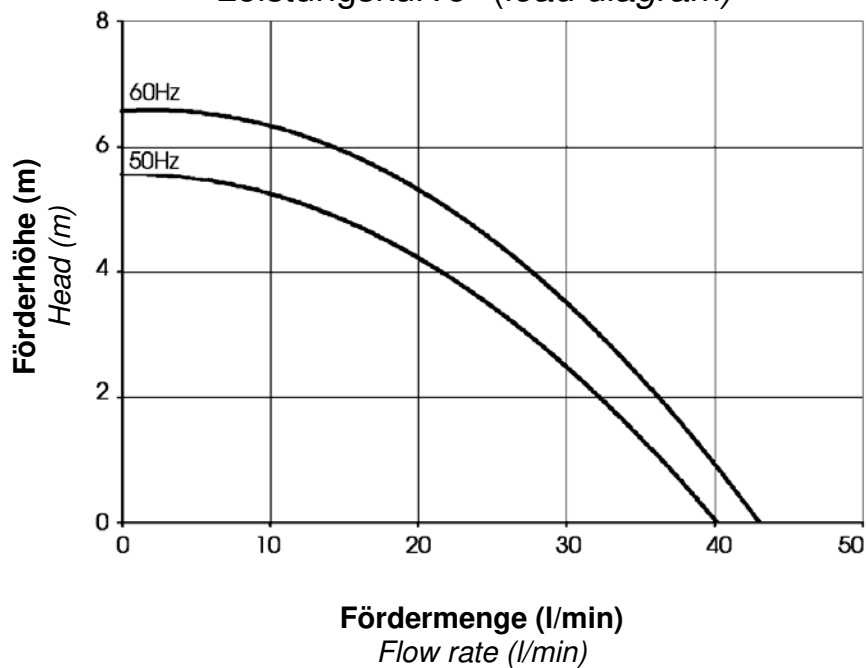


## Zentrifugalpumpe mit Magnetkupplung Magnetically coupled centrifugal pump NEMP 40/6



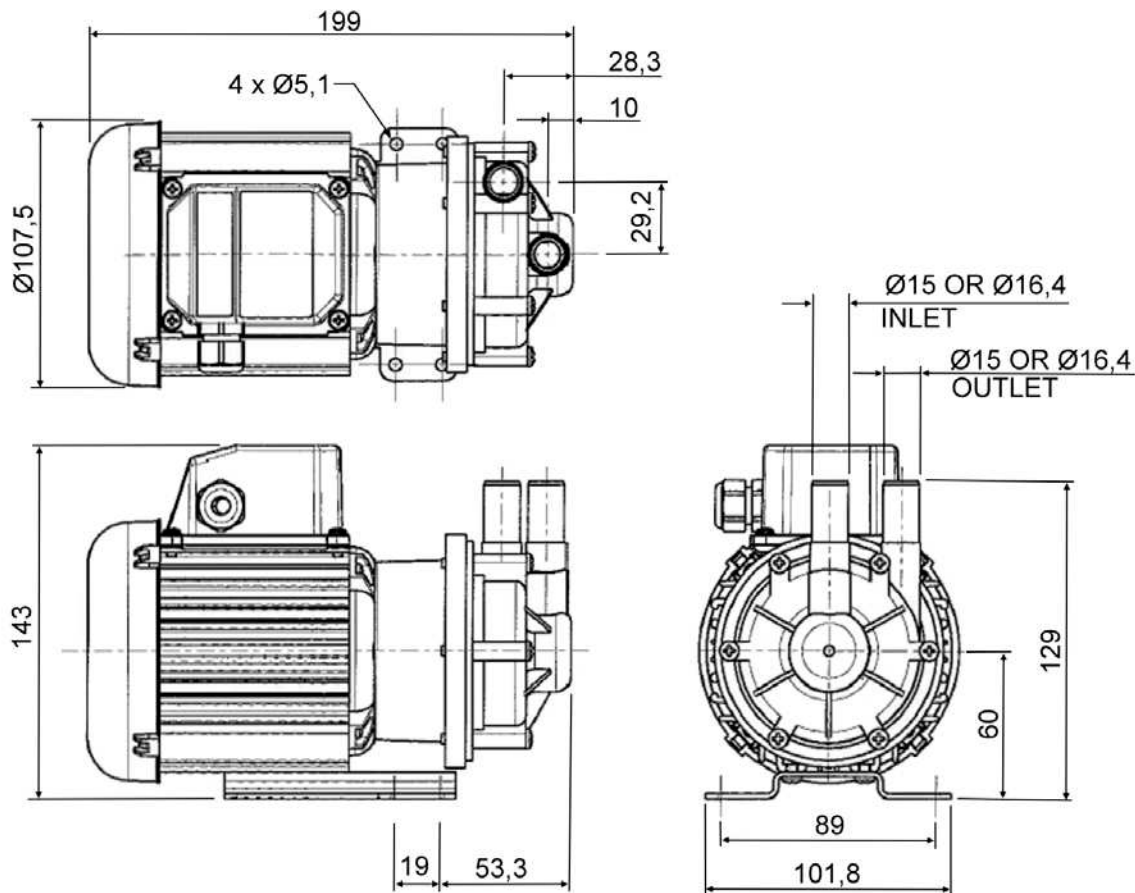
Leistungskurve\* (load diagram)\*



Typ Type	Volt	Ph	Hz	Saugstutzen inlet port	Druckstutzen discharge side	Artikel-Nr. PP Item number	Artikel-Nr. PPS Item number
NEMP 40/6	230	1	50	Ø 15mm glatt (plain)	Ø 15mm glatt (plain)	456901	
NEMP 40/6	230	1	50	3/8" BSP AG (M)	3/8" BSP AG (M)	456966	
NEMP 40/6	230	1	60	Ø 15mm glatt (plain)	Ø 15mm glatt (plain)		
NEMP 40/6	230	1	60	3/8" BSP AG (M)	3/8" BSP AG (M)		
NEMP 40/6	110	1	60	Ø 15mm glatt (plain)	Ø 15mm glatt (plain)	106942	
NEMP 40/6	110	1	60	3/8" BSP AG (M)	3/8" BSP AG (M)	046906	

\* Die Leistungskurve wurde mit Wasser bei 20°C ermittelt \* Performance tested with clean cold water @ 20°C

## Zentrifugalpumpe mit Magnetkupplung Magnetically coupled centrifugal pump NEMP 40/6



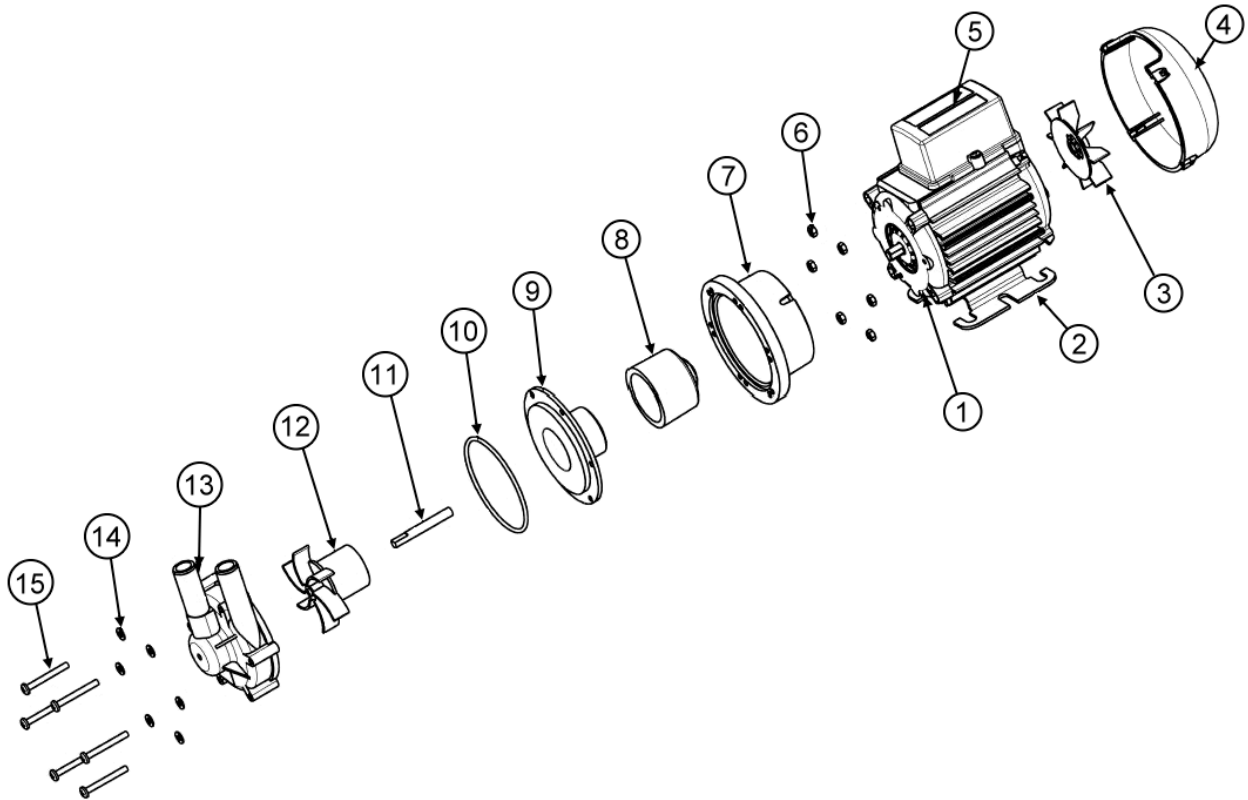
### Technische Daten (Technical data) NEMP 40/6

max. Fördermenge <i>(discharge rate)</i>	40 l/min (50Hz)	43 l/min (60Hz)
max. Förderhöhe <i>(delivery head)</i>	5,6 m (50Hz)	6,5 m (60Hz)
Temperaturbereich <i>(temperature range)</i>	-20...+85°C (PP)	
max. Dichte <i>(max. specific gravity)</i>	1,2 Kg/dm <sup>3</sup> @ max. 30 mPa s	
Gehäusedruck <i>(pump casing pressure)</i>	1,4 bar	
Saugstutzen <i>(inlet port)</i>	3/8" BSP AG (M)	Ø 21 mm glatt (plain)
Druckstutzen <i>(discharge side)</i>	3/8" BSP AG (M)	Ø 21 mm glatt (plain)
Gehäusematerial <i>(pump casing material)</i>	PP	
Flügelrad <i>(impeller)</i>	PP	
Welle <i>(spindle material)</i>	Keramik (Ceramic)	
O-Ring <i>(o-ring)</i>	EPDM alternativ NBR, VITON	
Motor <i>(motor)</i>	230 V, 1 Ph, 50Hz	230 V, 1 Ph, 60 Hz
	110 V, 1 Ph, 50 Hz	110 V, 1 Ph, 60 Hz
Leistung <i>(motor capacity)</i>	95 Watt	
Schutzart <i>(protection category)</i>	IP X5	
Gesamtgewicht <i>(total weight)</i>	~ 3,0 kg	

**Achtung:** Die Pumpen sind nicht selbstansaugend und nicht für Trockenlauf geeignet.

**Attention:** These magnetically pumps are designed for use with clean fluids. Solids will cause jamming. Abrasives will reduce pump live and invalidate the warranty. The pumps are not designed to run dry.

## Zentrifugalpumpe mit Magnetkupplung Magnetically coupled centrifugal pump NEMP 40/6



Typ	Pos.	Beschreibung	Description	Stück	Artikel-Nr.	zusätzl. Angaben
NEMP 40/6	1	Motor	<b>Motor</b>	1	116842	230 V
					116875	110 V
NEMP 40/6	2	Montagefuß	<b>Mounting Foot</b>	1	036329	
NEMP 40/6	3	Lüfterrad	<b>Fan CBM Motor</b>	1	036067	
NEMP 40/6	4	Lüfterabdeckung	<b>Fan Cowl</b>	1	036085	
NEMP 40/6	5	Anschlusskasten	<b>Terminal Box</b>	1	036078	
NEMP 40/6	6	Mutter	<b>Nut</b>	6	032105	
NEMP 40/6	7	Laterne	<b>Adaptor</b>	1	036324	
NEMP 40/6	8	Antriebsmagnet	<b>Drive Magnet</b>	1	006287	
NEMP 40/6	9	Spindelgehäuse	<b>Spindle Housing</b>	1	016311	
NEMP 40/6	10	O-Ring	<b>O-Ring</b>	1	013290	EPDM
					021056	Viton
					003398	Nitrile
NEMP 40/6	11	Spindel	<b>Spindle</b>	1	006244	Standard
					036347	99,5% Al
NEMP 40/6	12	Flügelrad	<b>Impeller</b>	1	016355	50Hz
					026215	60Hz
NEMP 40/6	13	Pumpengehäuse	<b>Pump Body</b>	1	016303	Ø 15mm
					036354	3/8" BSP
NEMP 40/6	14	Scheibe	<b>Washer</b>	6	001565	
NEMP 40/6	15	Schraube	<b>Screw</b>	6	022115	