

Turbinepumpe mit Magnetkupplung

Magnetically coupled turbine pump

Typ: HTTP ES

**Kenndaten:**

- kleine Fördermengen, große Förderhöhen
- Fördermengen max. bis $\sim 7\text{m}^3/\text{h}$, Förderhöhe bis $\sim 75\text{m}$
- Gehäuse und Impeller aus Alloy (AISI 316 – HC 276 – Titan, Druckstufe PN 25)
- Temperatur: -40°C bis $+160^\circ\text{C}$
- Gasanteile von bis zu 20% im Medium können ohne Kavitationserscheinungen gefördert werden.
- Der magnetgetriebene Impeller reduziert die Wartungskosten.

Standardausführung:

- Die feststehende Welle aus HC 276
- Hohe chemische Beständigkeit der PTFE / Kohlenstoff Lager
- Magnetkupplung mit hohem Drehmoment

Optionen:

- Flanschstützen nach DIN / EN und ANSI 150
- ATEX Zertifikat
- Gundplatte

Features:

- High head / low flow capability minimizes bypass requirements
- Flow up to $7\text{ m}^3/\text{h}$, head up to 84 m
- Heavy duty casing and impeller from wrought alloy (AISI 316 – HC 276 - Titanium)
- Temperature: -40°C + 160°C
- Handles up to 20% entrained gas, resists cavitation
- The magnetic drive impeller reduces maintenance costs.

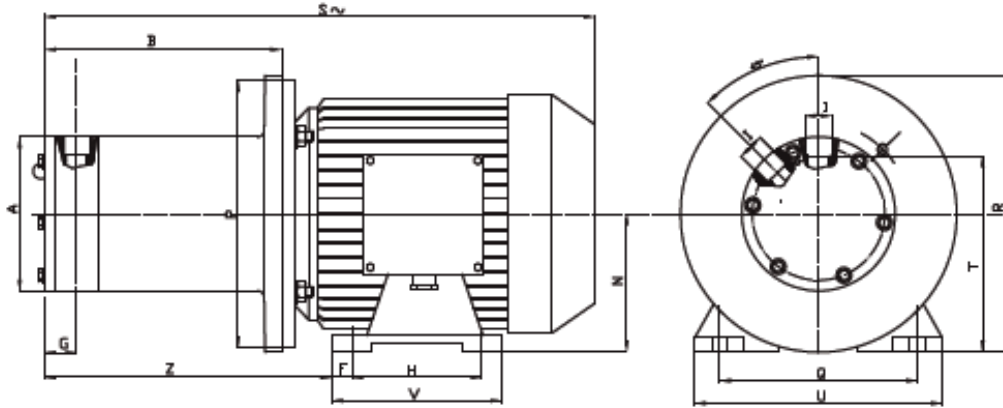
Standard:

- Static shaft in HC 276
- Chemical resistant PTFE/carbon sleeve bearings
- High torque magnetic coupling

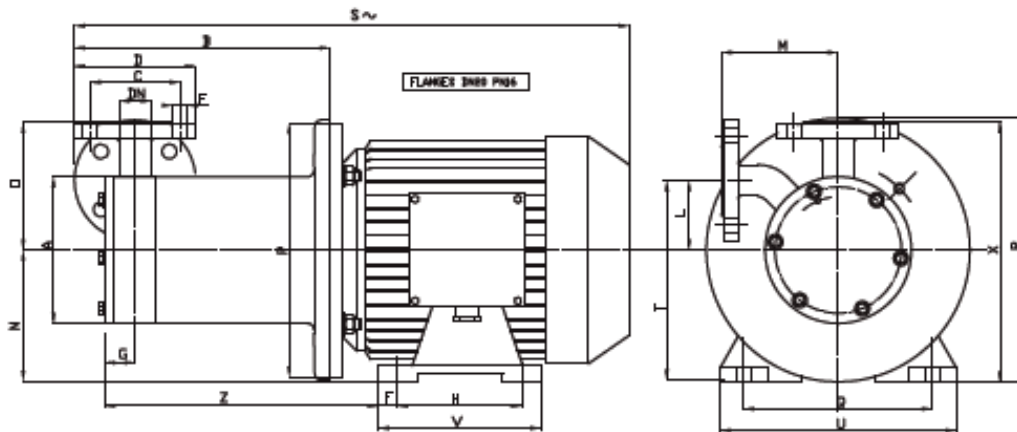
Optional:

- DIN / EN and ANSI 150 Flanges available.
- ATEX Certification AVAILABLE
- Baseplate

Turbinepumpe mit Magnetkupplung Magnetically coupled turbine pump HTTP ES 25 – 37 MABE / DIMENSION



| Pump Typ | Motor | Motor kW | Pumpenmaße - Dimension | | | | | | | | | | | | | | | | | | | | | |
|------------|-------|----------|------------------------|-----|---|---|---|------|----|-----|----|---|---|----|---|-----|-----|-----|-----|-----|-----|-----|-----|---|
| | | | A | B | C | D | E | F | G | H | I | L | M | N | O | P | Q | R | S | T | U | V | Z | X |
| HTTP ES 25 | G 80 | 1,1 | 123 | 191 | - | - | - | 12,5 | 25 | 100 | ¾" | - | - | 80 | - | 200 | 125 | 180 | 463 | 123 | 154 | 125 | 230 | - |
| HTTP ES 37 | G 80 | 1,1 | 123 | 191 | - | - | - | 12,5 | 25 | 100 | ¾" | - | - | 80 | - | 200 | 125 | 180 | 463 | 123 | 154 | 125 | 230 | - |
| | G 90 | 2,2 | | | | | | | | 125 | | | | 90 | | | | | | | | | | |



| Pump Typ | Motor | Motor kW | Pumpenmaße - Dimension | | | | | | | | | | | | | | | | | | | | | |
|------------|-------|----------|------------------------|-------|----|-----|----|------|----|-----|----|----|----|----|-----|-----|-----|-----|-------|-----|-----|-----|-----|-----|
| | | | A | B | C | D | E | F | G | H | I | L | M | N | O | P | Q | R | S | T | U | V | Z | X |
| HTTP ES 25 | G 80 | 1,1 | 123 | 218,5 | 75 | 105 | 14 | 12,5 | 25 | 100 | 20 | 61 | 98 | 80 | 100 | 200 | 125 | 180 | 450,5 | 141 | 154 | 125 | 230 | 180 |
| HTTP ES 37 | G 80 | 1,1 | 123 | 218,5 | 75 | 105 | 14 | 12,5 | 25 | 100 | 20 | 61 | 98 | 80 | 100 | 200 | 125 | 180 | 450,5 | 141 | 154 | 125 | 230 | 180 |
| | G 90 | 2,2 | | | | | | | | 125 | | | | 90 | | | | | | | | | | |

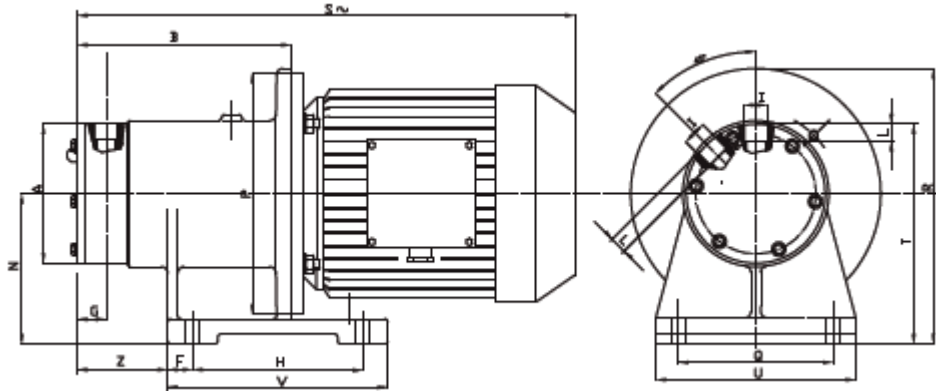
* abhängig vom Motorfabrikat / *different from the manufacture*

* für BG90 und BG100 Motor / *for BG90 and BG 100 motor*

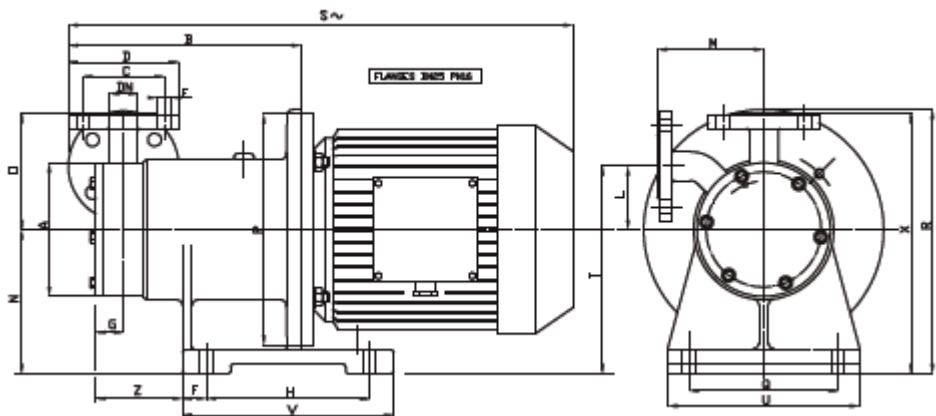
Turbinepumpe mit Magnetkupplung

Magnetically coupled turbine pump

HTTP ES 49 – 78 MAßE / DIMENSION



| Pump Typ | Motor | Motor kW | Maße / Dimension mm | | | | | | | | | | | | | | | | | | | | | |
|------------|-------|----------|---------------------|-----|---|---|----|----|-----|-----|----|----|-----|-----|-----|-----|-----|-----|-----|-----|-----|-----|------|---|
| | | | A | B | C | D | E | F | G | H | I | L | M | N | O | P | Q | R | S~ | T | U | V | Z | X |
| HTTP ES 49 | G90 | 2,2 | 139 | 215 | - | - | - | 25 | 29 | 170 | 1" | 20 | - | 150 | - | 200 | 155 | 275 | 471 | 220 | 200 | 220 | 90,5 | - |
| | G 100 | 3 | | - | - | - | 25 | 29 | 170 | 1" | 20 | - | 150 | - | 250 | 155 | 275 | 539 | | | | | | |
| HTTP ES 78 | G 100 | 3 | 158 | 225 | - | - | - | 25 | 29 | 170 | 1" | 20 | - | 150 | - | 250 | 155 | 275 | 539 | 230 | 200 | 220 | 92 | - |
| | G 112 | 4 | | | - | - | - | 25 | 29 | 170 | 1" | 20 | - | 150 | - | 250 | 155 | 275 | 548 | | | | | |

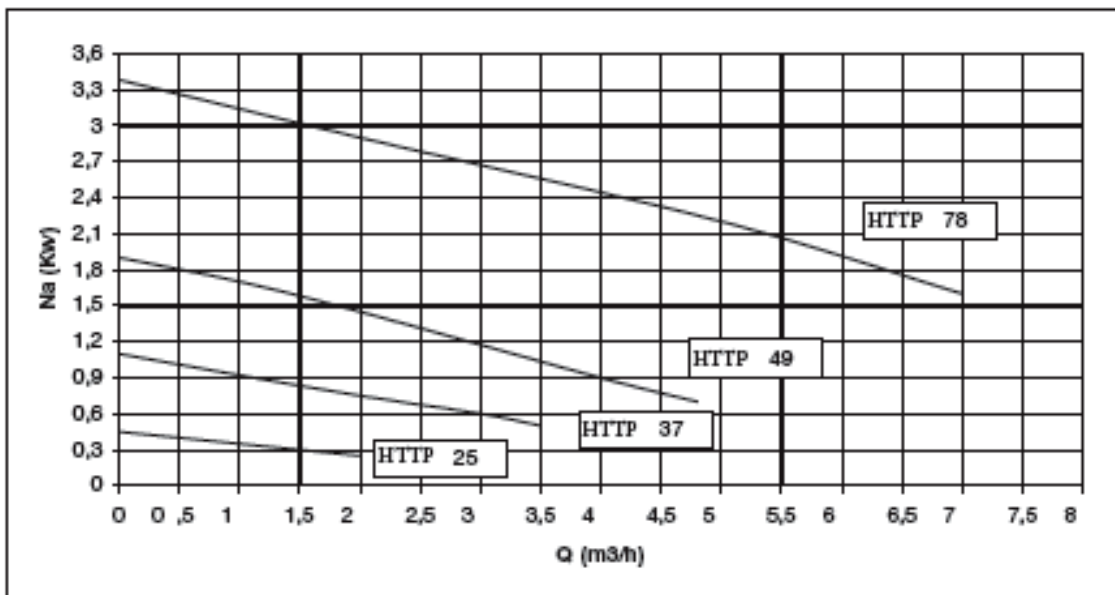
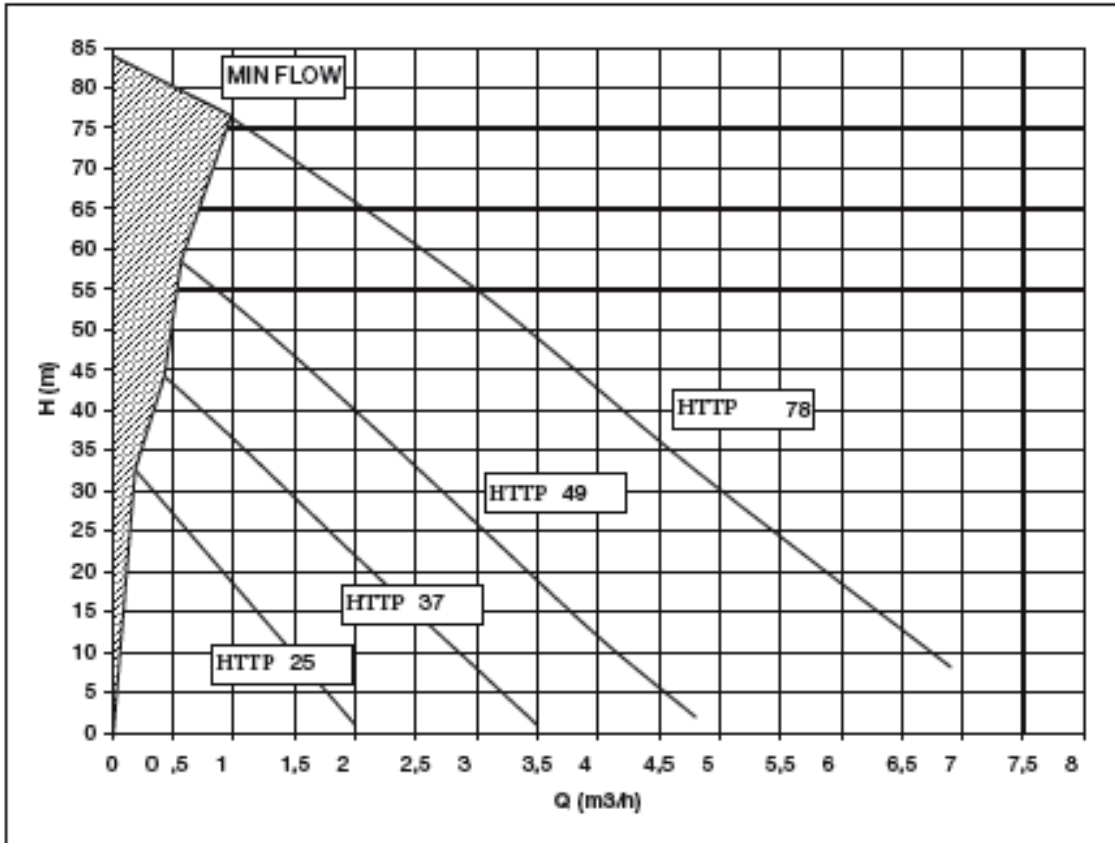


| Pump Typ | Motor | Motor kW | Maße / Dimension mm | | | | | | | | | | | | | | | | | | | | | |
|------------|-------|----------|---------------------|-----|----|-----|----|----|-----|-----|----|------|-----|-----|-----|-----|-----|-----|-----|-------|-----|-----|------|-----|
| | | | A | B | C | D | E | F | G | H | DN | L | M | N | O | P | Q | R | S~ | T | U | V | Z | X |
| HTTP ES 49 | G90 | 2,2 | 139 | 243 | 85 | 115 | 14 | 25 | 29 | 170 | 25 | 62 | 111 | 150 | 121 | 200 | 155 | 275 | 523 | 212 | 200 | 220 | 90,5 | 271 |
| | G 100 | 3 | | - | - | - | 25 | 29 | 170 | 25 | 62 | 111 | 150 | 121 | 250 | 155 | 275 | 569 | | | | | | |
| HTTP ES 78 | G 100 | 3 | 158 | 253 | 85 | 115 | 14 | 25 | 29 | 170 | 25 | 85,5 | 133 | 150 | 133 | 250 | 155 | 275 | 569 | 235,5 | 200 | 220 | 92 | 283 |
| | G 112 | 4 | | | - | - | - | 25 | 29 | 170 | 25 | 85,5 | 133 | 150 | 133 | 250 | 155 | 275 | 577 | | | | | |

* abhängig vom Motorfabrikat / *different from the manufacture*
 * für BG90 und BG100 Motor / *for BG90 and BG 100 motor*

Turbinepumpe mit Magnetkupplung Magnetically coupled turbine pump HTTP ES

Leistungskurve* (*load diagram*)*

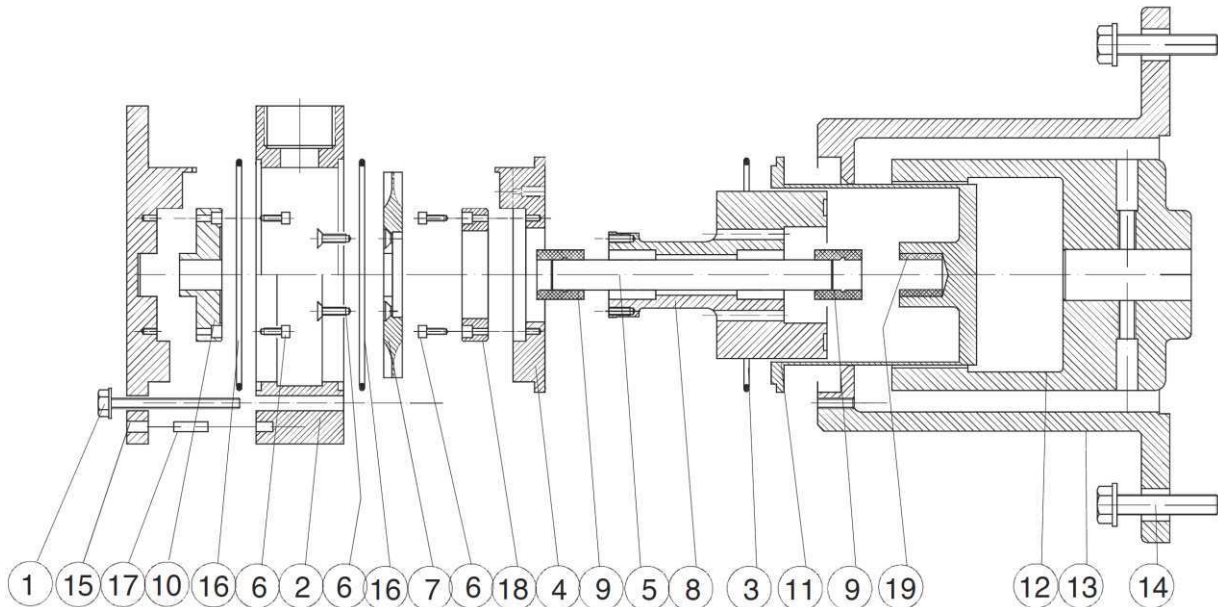


* Die Leistungskurve wurde mit Wasser bei 20°C ermittelt * *Performance tested with clean cold water @ 20°C*

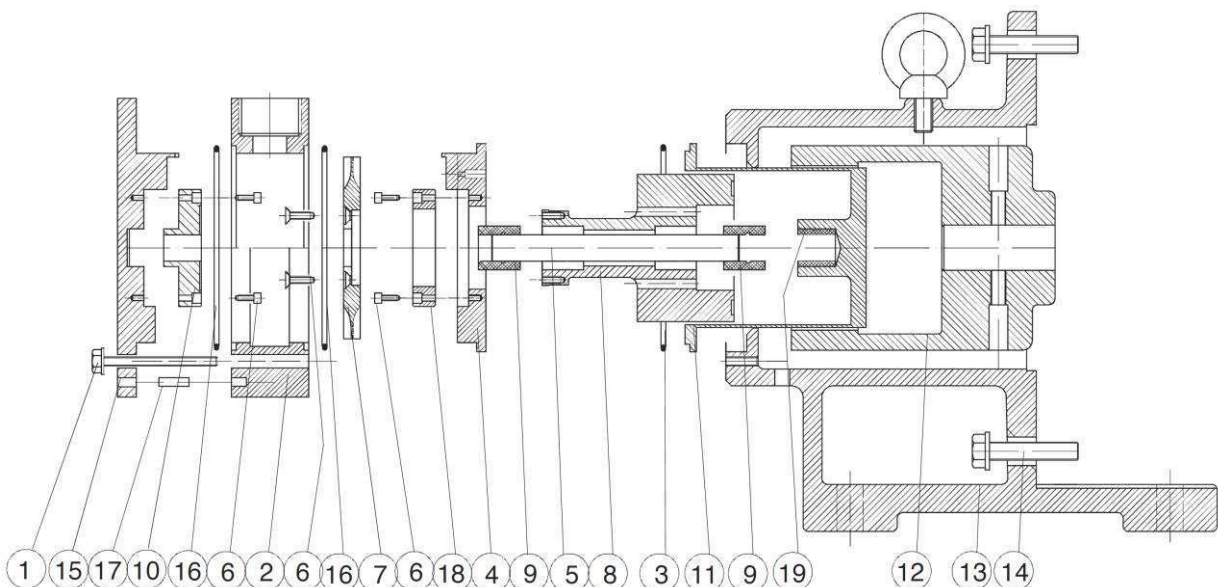
Turbinepumpe mit Magnetkupplung

Magnetically coupled turbine pump

http ES 25 – 37 / 49 - 78 – Schnitt Ersatzteile – Section and Partlist



| Pos. | 1 | 2 | 3 | 4 | 5 | 6 | 7 | 8 | 9 | 10 | 11 | 12 | 13 | 14 | 15 | 16 | 17 | 18 | 19 |
|---|-------------------------|---------------------|---------------|-------------------------------------|----------------|---------------------------|---------------------|----------------------------|------------------|--------------------------|---------------------------|-------------------------|--------------------|--------------------|--------------------|---------------|--------------------|------------------------|-------------------------|
| Teil / Part Benennung Description | Schrauben Set screws | Gehäuse Head | O-Ring | Flansch hinten Flange rear | Welle Shaft | Schrauben Screw Set | Impeller | Magnet Innen Int. | Lager Bearing | Scheibe Front Ring | Gehäuse Hinten rear | Magnet Außen Ext. | Laterne Bracket | Schrauben Set | Deckel Cover | O- Ring | Bolzen Pin | Ring Hinten rear | Lager Hinten rear |
| Werkstoff Material | Edelst. AISI 304 | Edelst. AISI 316 | EPDM Viton | Edelst. AISI316 | Hast. C276 | Edelst. AISI 316 | Edelst. AISI 316 | Edelst AISI316 NdFeb | PTFEC | PTFEC | Edelst. AISI316 | C-Stahl C40 NdFeb | ALU | Edelst. AISI316 | Edelst. AISI316 | EPDM Viton | Edelst. AISI316 | PTFEC | AISI316 |



| Pos. | 1 | 2 | 3 | 4 | 5 | 6 | 7 | 8 | 9 | 10 | 11 | 12 | 13 | 14 | 15 | 16 | 17 | 18 | 19 |
|---|-------------------------|---------------------|---------------|-------------------------------------|----------------|---------------------------|---------------------|----------------------------|------------------|--------------------------|---------------------------|-------------------------|--------------------|--------------------|--------------------|---------------|--------------------|------------------------|-------------------------|
| Teil / Part Benennung Description | Schrauben Set screws | Gehäuse Head | O-Ring | Flansch hinten Flange rear | Welle Shaft | Schrauben Screw Set | Impeller | Magnet Innen Int. | Lager Bearing | Scheibe Front Ring | Gehäuse Hinten rear | Magnet Außen Ext. | Laterne Bracket | Schrauben Set | Deckel Cover | O- Ring | Bolzen Pin | Ring Hinten rear | Lager Hinten rear |
| Werkstoff Material | Edelst. AISI 304 | Edelst. AISI 316 | EPDM Viton | Edelst. AISI316 | Hast. C276 | Edelst. AISI 316 | Edelst. AISI 316 | Edelst AISI316 NdFeb | PTFEC | PTFEC | Edelst. AISI316 | C-Stahl C40 NdFeb | ALU | Edelst. AISI316 | Edelst. AISI316 | EPDM Viton | Edelst. AISI316 | PTFEC | AISI316 |