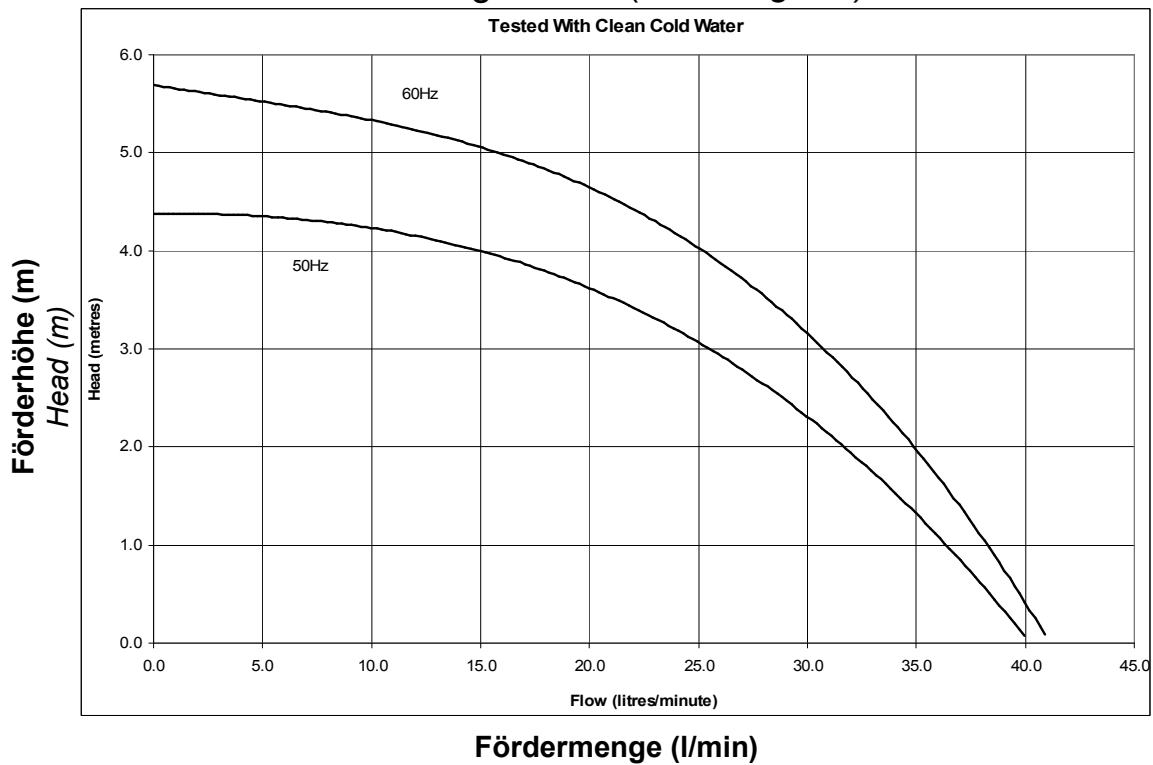


Zentrifugalpumpe mit Magnetkupplung Magnetically coupled centrifugal pump NEMP 40/4



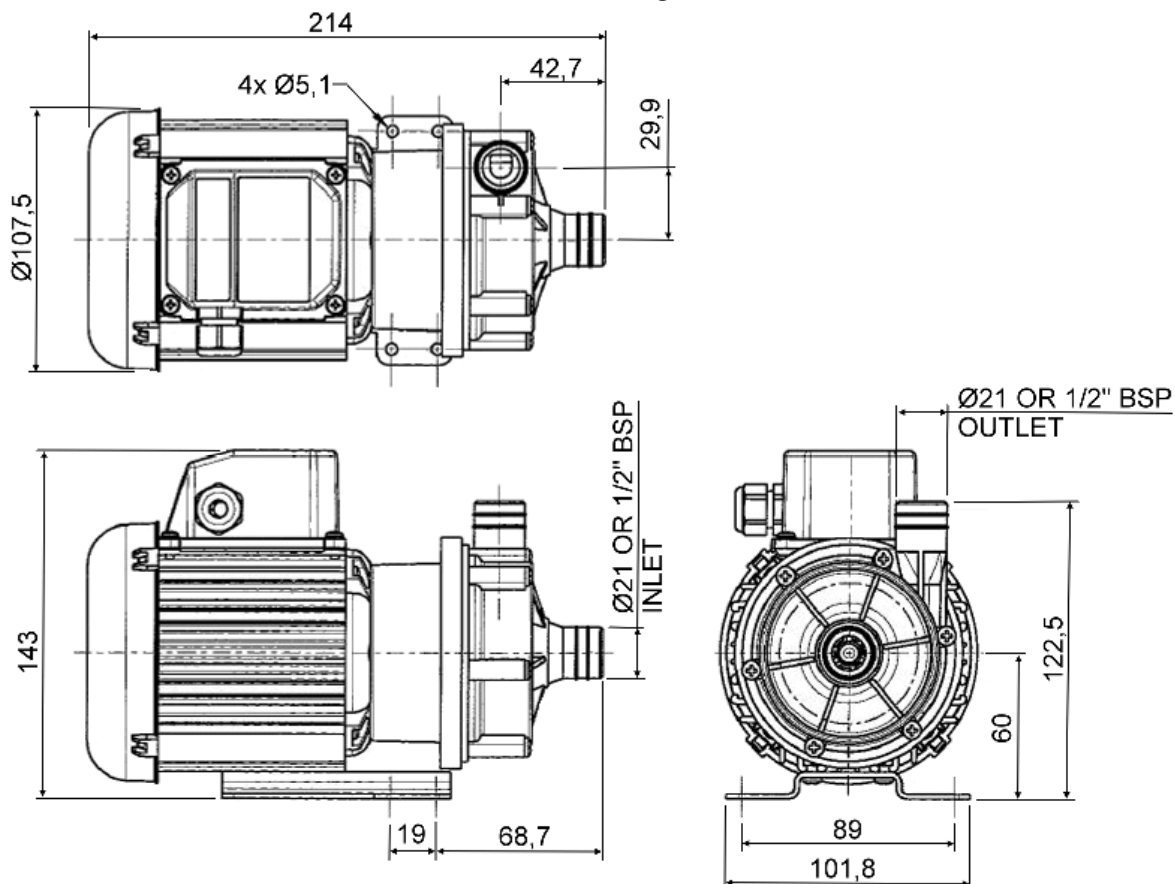
Leistungskurve* (load diagram)*



| Typ Type | Volt | Ph | Hz | Saugstutzen inlet port | Druckstutzen discharge side | Artikel-Nr. PP Item number | Artikel-Nr. PPS Item number |
|-------------|------|----|----|---------------------------|--------------------------------|-------------------------------|--------------------------------|
| NEMP 40/4 | 230 | 1 | 50 | Ø 21mm glatt (plain) | Ø 21mm glatt (plain) | 406913 | |
| NEMP 40/4 | 230 | 1 | 50 | ½" BSP AG (M) | ½" BSP AG (M) | 406943 | |
| NEMP 40/4 | 110 | 1 | 50 | Ø 21mm glatt (plain) | Ø 21mm glatt (plain) | | |
| NEMP 40/4 | 110 | 1 | 60 | ½" BSP AG (M) | ½" BSP AG (M) | 416918 | |
| NEMP 40/4 | 110 | 1 | 60 | Ø 21mm glatt (plain) | Ø 21mm glatt (plain) | 106936 | |

* Die Leistungskurve wurde mit Wasser bei 20°C ermittelt * Performance tested with clean cold water @ 20°C

Zentrifugalpumpe mit Magnetkupplung Magnetically coupled centrifugal pump NEMP 40/4

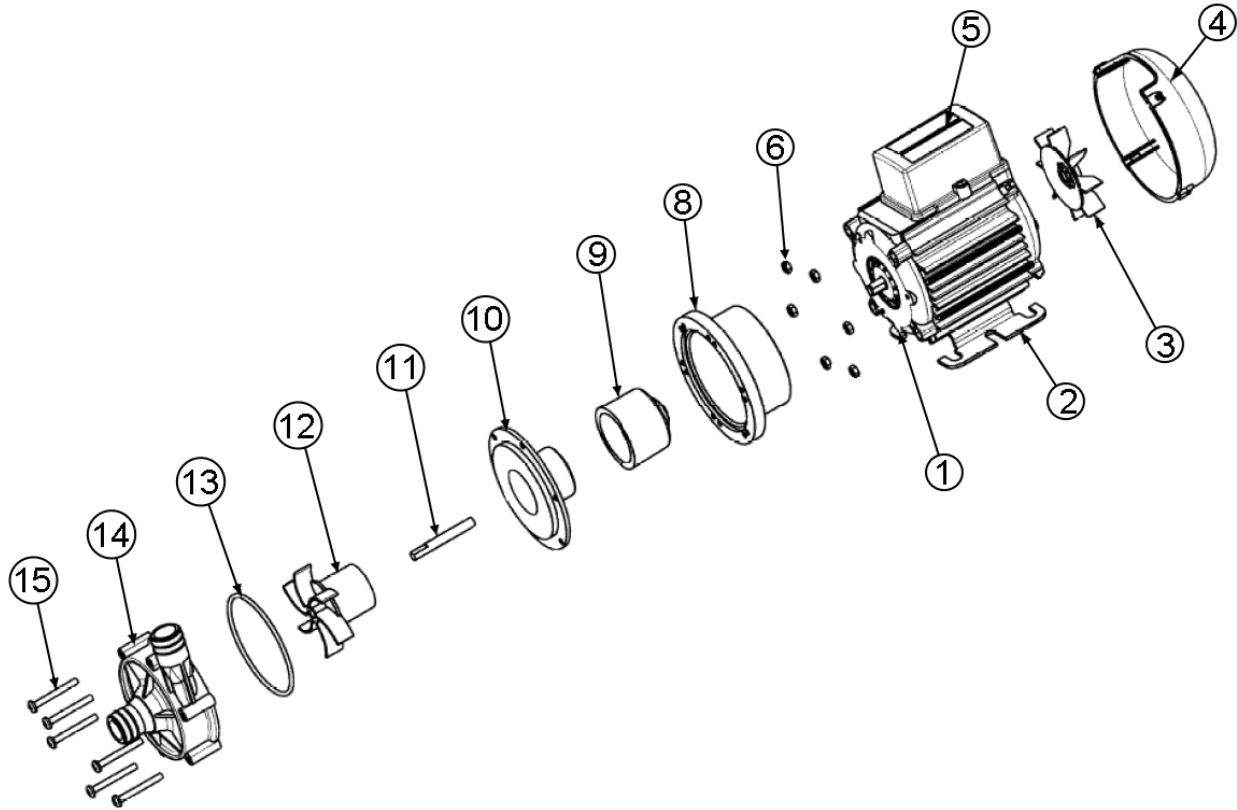


| Technische Daten (Technical data) NEMP 40/4 | | | |
|---|-------------------------|--|-----------------------|
| max. Fördermenge | (discharge rate) | 40 l/min (50Hz) | 41 l/min (60Hz) |
| max. Förderhöhe | (delivery head) | 4,4 m (50Hz) | 5,7 m (60Hz) |
| Temperaturbereich | (temperature range) | -20...+85°C (PP) | |
| max. Dichte | (max. specific gravity) | 1,2 Kg/dm ³ @ max. 30 mPa s | |
| Gehäusedruck | (pump casing pressure) | 1,4 bar | |
| Saugstutzen | (inlet port) | 1/2" BSP AG (M) | Ø 21 mm glatt (plain) |
| Druckstutzen | (discharge side) | 1/2" BSP AG (M) | Ø 21 mm glatt (plain) |
| Gehäusematerial | (pump casing material) | PP | |
| Flügelrad | (impeller) | PP | |
| Welle | (spindle material) | Keramik (Ceramic) | |
| O-Ring | (o-ring) | EPDM alternativ NBR, VITON | |
| Motor | (motor) | 230 V, 1 Ph, 50Hz | 230 V, 1 Ph, 60 Hz |
| | | 110 V, 1 Ph, 50 Hz | 110 V, 1 Ph, 60 Hz |
| Leistung | (motor capacity) | 60 Watt | |
| Schutzart | (protection category) | IP 54 | |
| Gesamtgewicht | (total weight) | ~ 2,7kg | |

Achtung: Die Pumpen sind nicht selbstansaugend und nicht für Trockenlauf geeignet.

Attention: These magnetically pumps are designed for use with clean fluids. Solids will cause jamming. Abrasives will reduce pump live and invalidate the warranty. The pumps are not designed to run dry.

Zentrifugalpumpe mit Magnetkupplung Magnetically coupled centrifugal pump NEMP 40/4



| Typ | Pos. | Beschreibung | Description | Stück | Artikel-Nr. | zusätzl. Angaben |
|-----------|------|-----------------|------------------------|-------|-------------|------------------|
| NEMP 40/4 | 1 | Motor | Motor | 1 | 116849 | 230 V |
| | | | | | 116874 | 110 V |
| NEMP 40/4 | 2 | Montagefuß | Mounting Foot | 1 | 036329 | |
| NEMP 40/4 | 3 | Lüfterrad | Fan | 1 | 001577 | |
| NEMP 40/4 | 4 | Lüfterabdeckung | Fan Cowl | 1 | 036085 | |
| NEMP 40/4 | 5 | Anschlusskasten | Terminal Box | 1 | 036078 | |
| NEMP 40/4 | 6 | Mutter | Nut | 6 | 032105 | |
| NEMP 40/4 | 8 | Laterne | Adaptor | 1 | 036324 | |
| NEMP 40/4 | 9 | Antriebsmagnet | Drive Magnet | 1 | 006287 | |
| NEMP 40/4 | 10 | Spindelgehäuse | Spindle Housing | 1 | 016311 | |
| NEMP 40/4 | 11 | Spindel | Spindle | 1 | 006244 | Standard |
| | | | | | 036347 | 99,5% Al |
| NEMP 40/4 | 12 | Flügelrad | Impeller | 1 | 026214 | 50Hz |
| | | | | | 026213 | 60Hz |
| NEMP 40/4 | 13 | O-Ring | O-Ring | 1 | 013290 | EPDM |
| | | | | | 021056 | Viton |
| | | | | | 003398 | Nitrile |
| NEMP 40/4 | 14 | Pumpengehäuse | Pump Body | 1 | 016358 | Ø 21mm PP |
| | | | | | 016366 | Ø 21mm PPS |
| | | | | | 016360 | ½" BSP PP |
| | | | | | 016368 | ½" BSP PPS |
| NEMP 40/4 | 15 | Schraube | Screw | 6 | 022115 | |