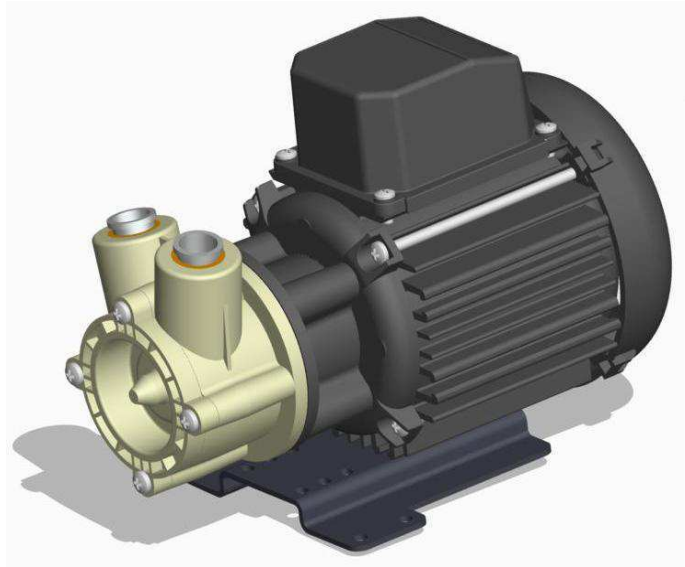
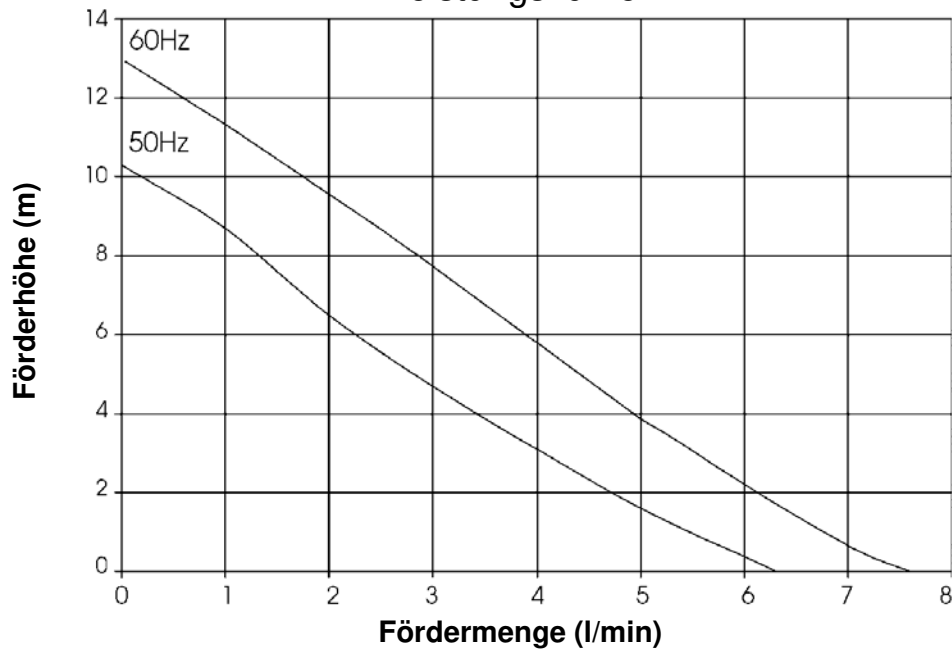


Zentrifugalpumpe mit Magnetkupplung Magnetically coupled centrifugal pump HPR 6/11



Leistungskurve*



| Typ | Volt | Ph | Hz | Saugstutzen | Druckstutzen | Artikel-Nr. PPS |
|----------|------|----|----|-------------|--------------|-----------------|
| HPR 6/11 | 230 | 1 | 50 | Ø15mm glatt | Ø15mm glatt | 416946 |
| HPR 6/11 | 230 | 1 | 50 | ½" BSP AG | ½" BSP AG | 416947 |
| HPR 6/11 | 230 | 1 | 50 | 3/8" NPT IG | 3/8" NPT IG | 486950 |
| HPR 6/11 | 110 | 1 | 50 | Ø15mm glatt | Ø15mm glatt | |
| HPR 6/11 | 110 | 1 | 50 | ½" BSP AG | ½" BSP AG | |

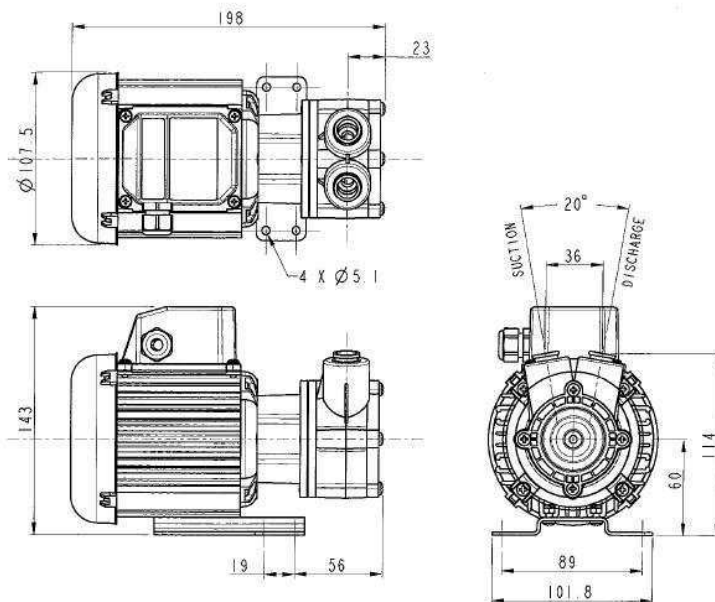
* Die Leistungskurve wurde mit Wasser bei 20°C ermittelt

* Performance tested with clean cold water @ 20°C

Zentrifugalpumpe mit Magnetkupplung

Magnetically coupled centrifugal pump

HPR 6/11



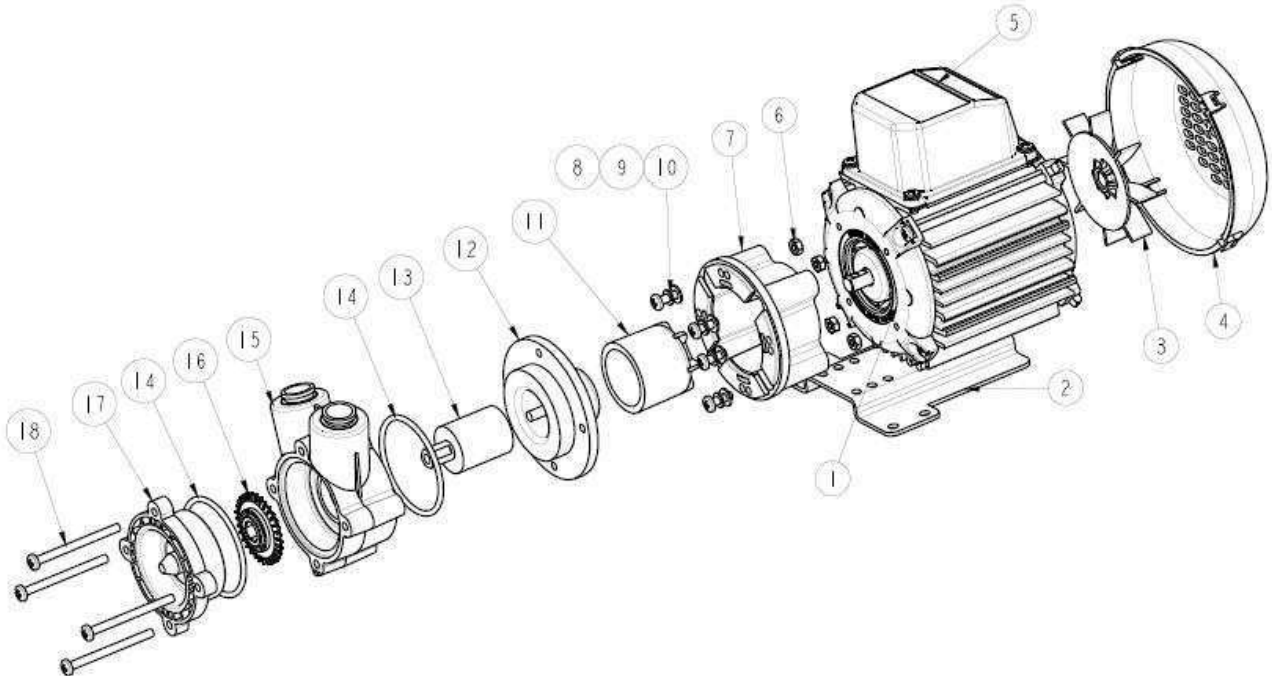
Technische Daten (Technical data)

| | | | |
|-------------------|--------------------------------|--|----------------------------|
| max. Fördermenge | (discharge rate) | 6,2 l/min (50Hz) | 7,3 l/min (60Hz) |
| max. Förderhöhe | (delivery head) | 10,5 m (50Hz) | 13 m (60Hz) |
| Temperaturbereich | (temperature range) | -20...+85°C | |
| max. Dichte | (max. specific gravity) | 1,2 Kg/dm ³ @ max. 30 mPa s | |
| Gehäusedruck | (pump casing pressure) | 10 bar | |
| Saugstutzen | (inlet port) | 1/2" BSP AG | Ø 15 mm glatt plain |
| Druckstutzen | (discharge side) | 1/2" BSP AG | Ø 15 mm glatt plain |
| Gehäusematerial | (pump casing material) | PPS | |
| Flügelrad | (impeller) | PPS | |
| Welle | (spindle material) | Keramik | |
| O-Ring | (o-ring) | NBR (Nitrile) | |
| Motor | (motor) | 230 V, 1 Ph, 50-60 Hz | 110 V, 1 Ph, 50-60 Hz |
| Leistung | (motor capacity) | 60 Watt (Input) / 35 Watt (Output) | |
| Schutzart | (protection category) | IP X5 | |
| Gesamtgewicht | (total weight) | ~ 2,6 kg | |

Achtung: Die Pumpen sind nicht selbstansaugend und nicht für Trockenlauf geeignet.

Attention: These magnetically pumps are designed for use with clean fluids. Solids will cause jamming. Abrasives will reduce pump live and invalidate the warranty. The pumps are not designed to run dry.

Zentrifugalpumpe mit Magnetkupplung Magnetically coupled centrifugal pump HPR 6/11



| Typ | Pos. | Beschreibung | Description | Stück | Artikel-Nr. | zusätzl. Angaben |
|----------|------|-----------------|------------------------|-------|-------------|------------------|
| HPR 6/11 | 1 | Motor | Motor | 1 | 116849 | 230V 50/60 Hz |
| | | | | | 116874 | 110V 50/60 Hz |
| HPR 6/11 | 2 | Montagefuß | Mounting Foot | 1 | 036329 | |
| HPR 6/11 | 3 | Lüfterrad | Fan | 1 | 001577 | |
| HPR 6/11 | 4 | Lüfterabdeckung | Fan Cowl | 1 | 036085 | |
| HPR 6/11 | 5 | Anschlusskasten | Terminal Box | 1 | 036078 | |
| HPR 6/11 | 6 | Mutter | Nut | 4 | 032105 | |
| HPR 6/11 | 7 | Laterne | Adaptor | 1 | 036344 | |
| HPR 6/11 | 8 | Schraube | Screw | 4 | 022163 | |
| HPR 6/11 | 9 | Scheibe | Washer | 4 | 031215 | |
| HPR 6/11 | 10 | Scheibe | Washer | 4 | 001565 | |
| HPR 6/11 | 11 | Antriebsmagnet | Drive Magnet | 1 | 043311 | 8mm |
| | | | | | 023267 | 6mm |
| HPR 6/11 | 12 | Spindelgehäuse | Spindle Housing | 1 | 033276 | |
| HPR 6/11 | 13 | Antriebsmagnet | Driven Magnet | 1 | 033248 | |
| HPR 6/11 | 14 | O-Ring | O-Ring | 2 | 013394 | Nitrile |
| | | | | | 013291 | EPDM |
| | | | | | 003265 | Viton |
| HPR 6/11 | 15 | Pumpengehäuse | Pump Body | 1 | 003321 | 1/2" |
| | | | | | 043310 | 3/8" |
| | | | | | 033320 | Ø15mm |
| HPR 6/11 | 16 | Flügelrad | Impeller | 1 | 033323 | |
| HPR 6/11 | 17 | Pumpendeckel | Front Cover | 1 | 033249 | |
| HPR 6/11 | 18 | Schraube | Screw | 4 | 022270 | |