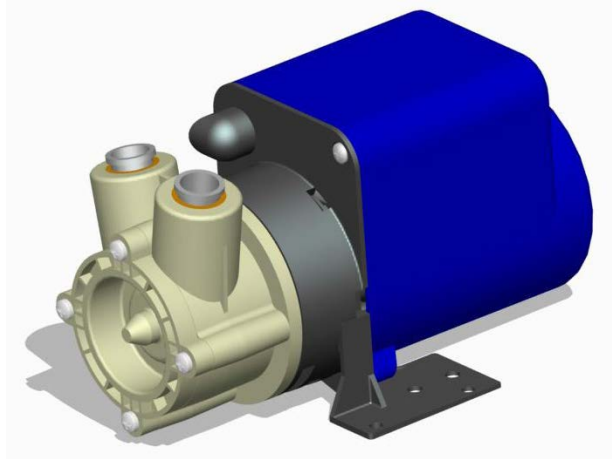
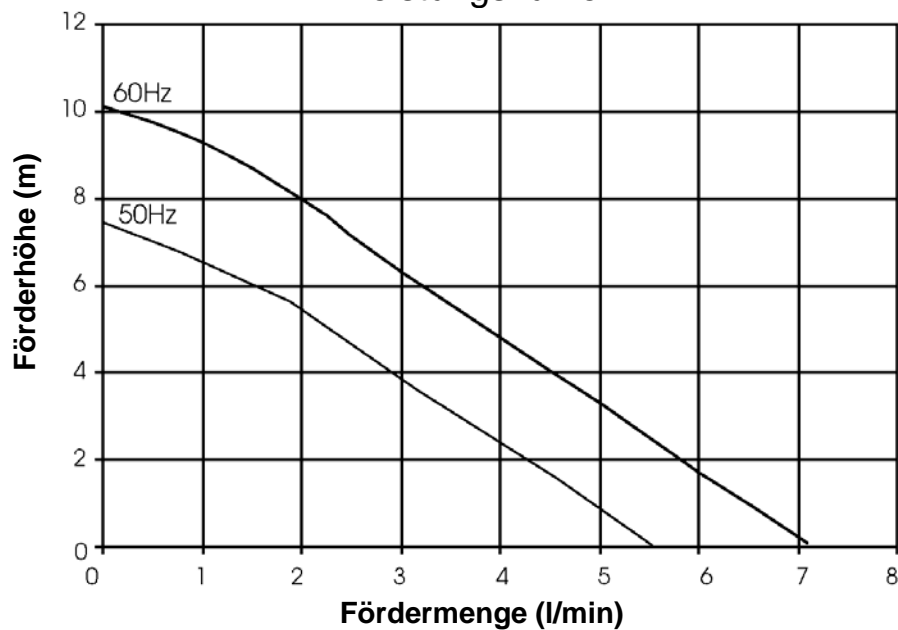


Zentrifugalpumpe mit Magnetkupplung Magnetically coupled centrifugal pump HPR 6/8



Leistungskurve*

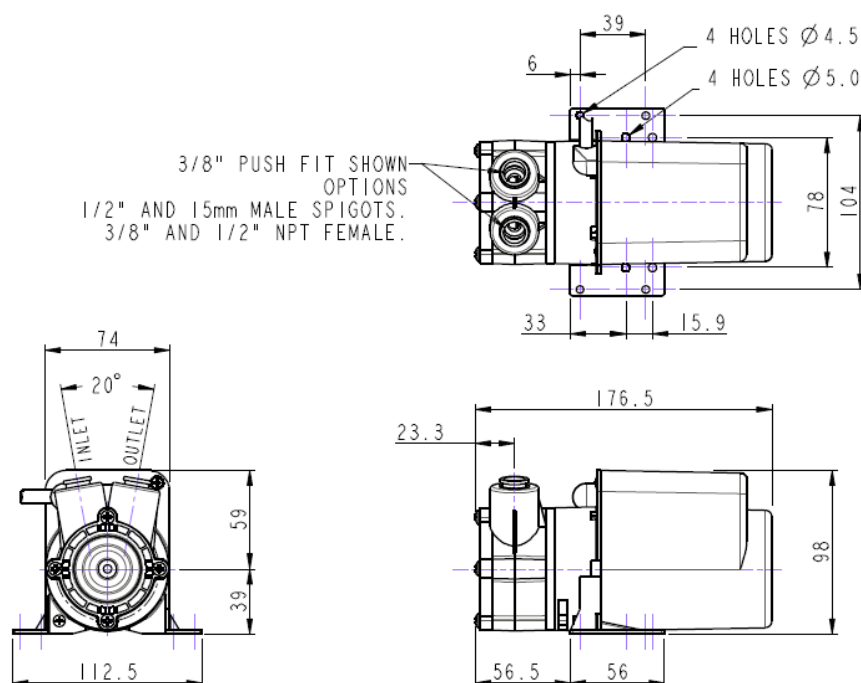


| Typ | Volt AC | Ph | Hz | Saugstutzen | Druckstutzen | Artikel-Nr. PPS |
|---------|---------|----|-------|-------------------|-------------------|-----------------|
| HPR 6/8 | 230 | 1 | 50-60 | Ø15mm glatt | Ø15mm glatt | 173957 |
| HPR 6/8 | 230 | 1 | 50-60 | ½" glatt (12,7mm) | ½" glatt (12,7mm) | 173958 |
| HPR 6/8 | 230 | 1 | 50-60 | 3/8" NPT-F-(IG) | 3/8" NPT-F-(IG) | 163958 |
| HPR 6/8 | 110 | 1 | 50-60 | Ø15mm glatt | Ø15mm glatt | |
| HPR 6/8 | 110 | 1 | 50-60 | 3/8" NPTF | 3/8" NPTF | 173947 |
| HPR 6/8 | 24 | 1 | 50 | Ø15mm glatt | Ø15mm glatt | |
| HPR 6/8 | 24 | 1 | 50 | ½" glatt (12,7mm) | ½" glatt (12,7mm) | |

* Die Leistungskurve wurde mit Wasser bei 20°C ermittelt

* Performance tested with clean cold water @ 20°C

Zentrifugalpumpe mit Magnetkupplung Magnetically coupled centrifugal pump HPR 6/8

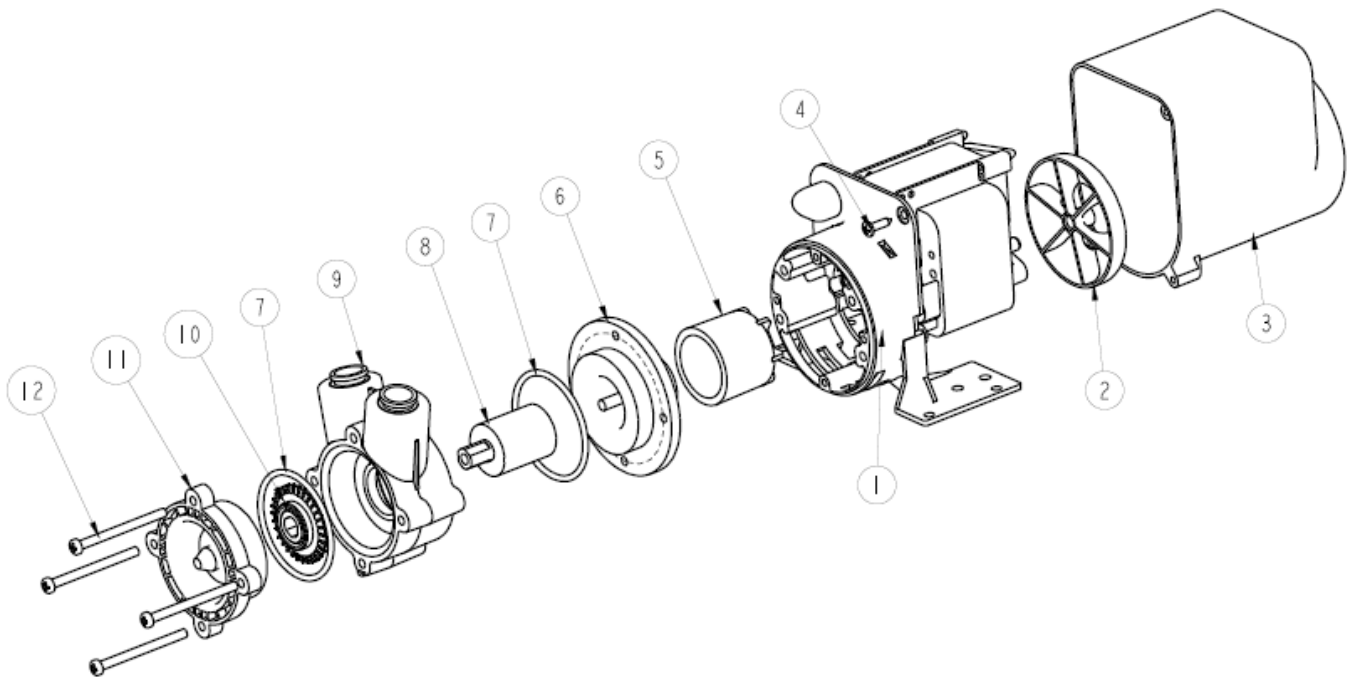


| Technische Daten (Technical data) | | | |
|-----------------------------------|--------------------------------|--------------------------------------------------|----------------------------|
| max. Fördermenge | (discharge rate) | 5,5 l/min (50Hz) | 5,5 l/min (60Hz) |
| max. Förderhöhe | (delivery head) | 7,4 m (50Hz) | 7,4 m (60Hz) |
| Temperaturbereich | (temperature range) | -20...+85°C | |
| max. Dichte | (max. specific gravity) | 1,2 Kg/dm ³ @ max. 30 mPa s | |
| Gehäusedruck | (pump casing pressure) | 10 bar | |
| Saugstutzen | (inlet port) | 3/8" NPTF | Ø 15 mm glatt plain |
| Druckstutzen | (discharge side) | 3/8" NPTF | Ø 15 mm glatt plain |
| Gehäusematerial | (pump casing material) | PPS | |
| Flügelrad | (impeller) | PPS | |
| Welle | (spindle material) | Keramik | |
| O-Ring | (o-ring) | NBR (Nitrile) | |
| Motor | (motor) | 230 V, 1 Ph, 50-60 Hz | 110 V, 1 Ph, 50-60 Hz |
| Leistung | (motor capacity) | 52 Watt (Input) / 18 Watt (Output) | |
| Schutzart | (protection category) | IP X2 | |
| Gesamtgewicht | (total weight) | ~ 2,275 kg | |

Achtung: Die Pumpen sind nicht selbstansaugend und nicht für Trockenlauf geeignet.

Attention: These magnetically pumps are designed for use with clean fluids. Solids will cause jamming. Abrasives will reduce pump live and invalidate the warranty. The pumps are not designed to run dry.

Zentrifugalpumpe mit Magnetkupplung Magnetically coupled centrifugal pump HPR 6/8



| Typ | Pos. | Beschreibung | Description | Stück | Artrikel-Nr. | zusätzl. Angaben |
|---------|------|----------------|------------------------|-------|--------------|------------------|
| HPR 6/8 | 1 | Motor | Motor | 1 | | |
| HPR 6/8 | 2 | Lüfterrad | Fan | 1 | 033322 | |
| HPR 6/8 | 3 | Motorabdeckung | Motor Cover | 1 | 043335 | |
| HPR 6/8 | 4 | Schraube | Screw | 2 | 001739 | |
| HPR 6/8 | 5 | Antriebsmagnet | Drive Magnet | 1 | 023267 | |
| HPR 6/8 | 6 | Spindelgehäuse | Spindle Housing | 1 | 043321 | |
| HPR 6/8 | 7 | O-Ring | O-Ring | 2 | 013394 | Nitrile |
| | | | | | 013291 | EPDM |
| | | | | | 003265 | Viton |
| HPR 6/8 | 8 | Antriebsmagnet | Driven Magnet | 1 | 033248 | |
| HPR 6/8 | 9 | Pumpengehäuse | Pump Body | 1 | 003321 | 1/2" |
| | | | | | 043310 | 3/8" |
| | | | | | 033320 | Ø15mm |
| HPR 6/8 | 10 | Flügelrad | Impeller | 1 | 033323 | |
| HPR 6/8 | 11 | | Front Cover | 1 | 033249 | |
| HPR 6/8 | 12 | Schraube | Screw | 4 | 022270 | |