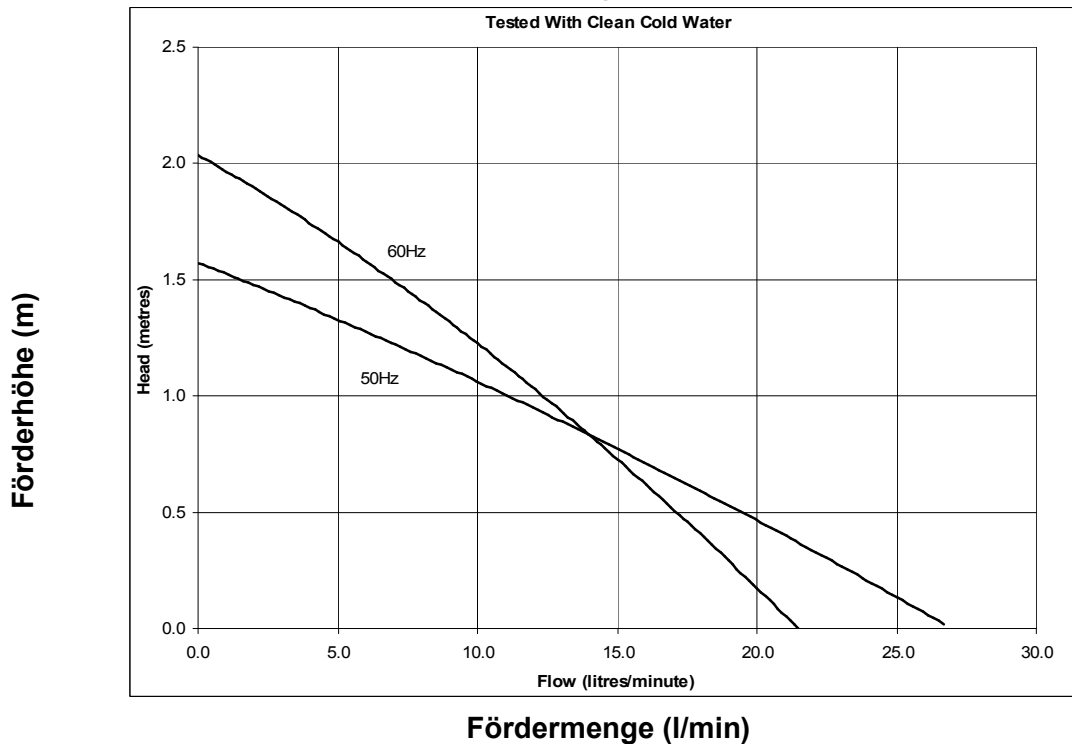


Zentrifugalpumpe mit Magnetkupplung Magnetically coupled centrifugal pump NDP 25/2



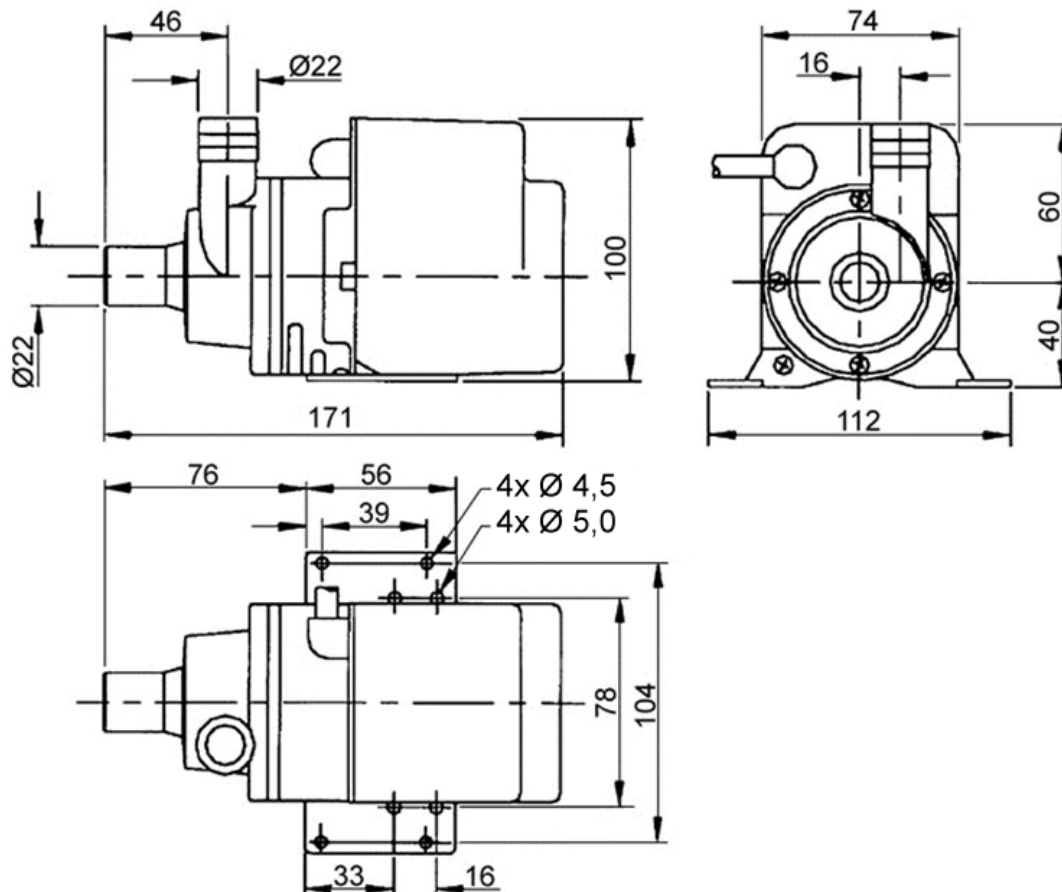
Leistungskurve*



| Typ | Volt AC | Ph | Hz | Saugstutzen | Druckstutzen | Artikel-Nr. PP | Artikel-Nr. PPS |
|----------|---------|----|-------|-------------|--------------|----------------|-----------------|
| NDP 25/2 | 230 | 1 | 50-60 | Ø22mm glatt | Ø22mm glatt | 123927 | |
| NDP 25/2 | 230 | 1 | 50-60 | ½" BSP AG | ½" BSP AG | 133923 | |
| NDP 25/2 | 230 | 1 | 50-60 | ½" BSP AG | ½" BSP AG | 163994 | |
| NDP 25/2 | 110 | 1 | 50-60 | Ø22mm glatt | Ø22mm glatt | 033937 | |
| NDP 25/2 | 110 | 1 | 50-60 | ½" BSP AG | ½" BSP AG | 033936 | |
| NDP 25/2 | 230 | 1 | 50-60 | Ø22mm glatt | Ø22mm glatt | 123921-UL | |
| NDP 25/2 | 24 | 1 | 50 | Ø22mm glatt | Ø22mm glatt | 033949 | |
| NDP 25/2 | 24 | 1 | 50 | ½" BSP AG | ½" BSP AG | 033950 | |

* Die Leistungskurve wurde mit Wasser bei 20°C ermittelt * Performance tested with clean cold water @ 20°C
A.-Nr.: 163994 Sonderausführung für Hydrauliköl, Impeller nicht gekapselt

Zentrifugalpumpe mit Magnetkupplung Magnetically coupled centrifugal pump NDP 25/2



Technische Daten (Technical data) NDP 25/2

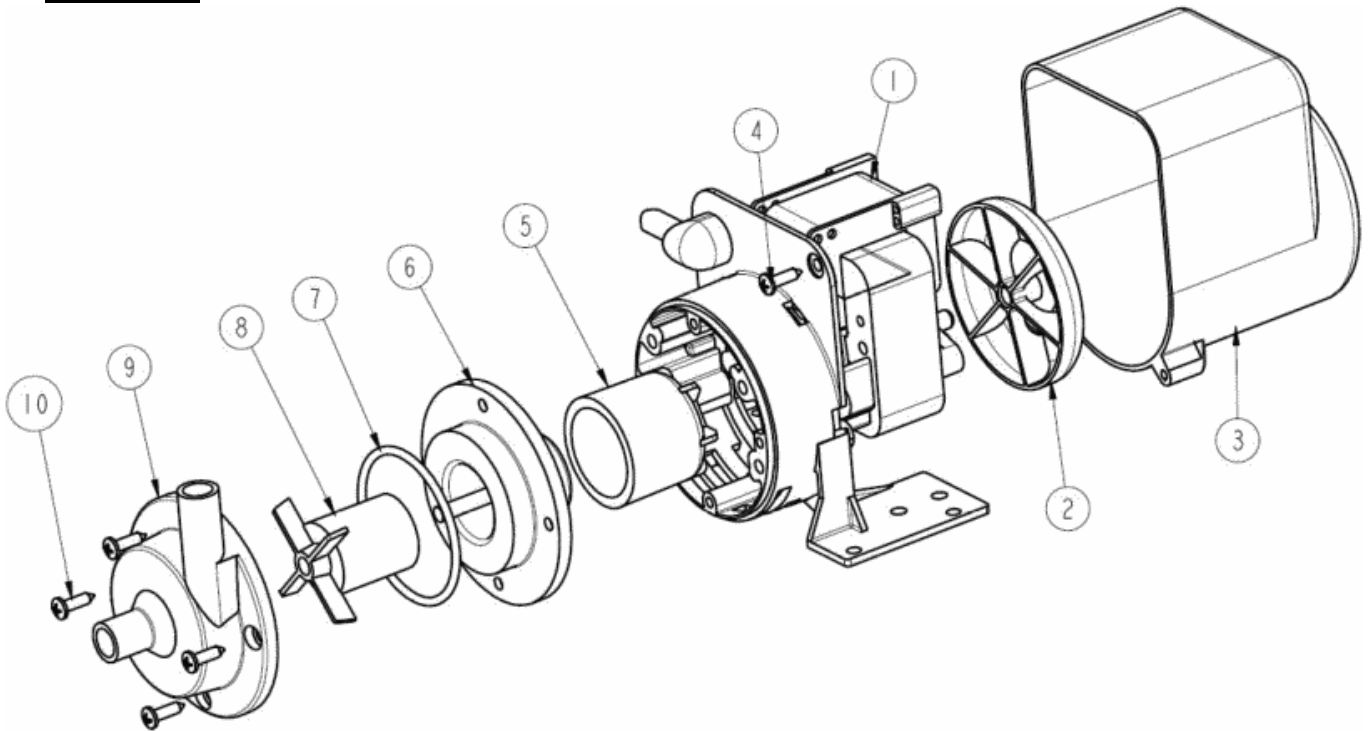
| | | | |
|-------------------|--------------------------------|--------------------------------------------------|------------------------------|
| max. Fördermenge | (discharge rate) | 27 l/min (50Hz) | 21 l/min (60Hz) |
| max. Förderhöhe | (delivery head) | 1,6 m (50Hz) | 2,1 m (60Hz) |
| Temperaturbereich | (temperature range) | -20...+85°C (PP) | -20...+95°C (PPS) |
| max. Dichte | (max. specific gravity) | 1,2 Kg/dm ³ @ max. 30 mPa s | |
| Gehäusedruck | (pump casing pressure) | 1,4 bar | |
| Saugstutzen | (inlet port) | ½" BSP AG | Ø 22 mm glatt (plain) |
| Druckstutzen | (discharge side) | ½" BSP AG | Ø 22 mm glatt (plain) |
| Gehäusematerial | (pump casing material) | PP | PPS |
| Flügelrad | (impeller) | PP | PPS |
| Welle | (spindle material) | Keramik (Alumina ceramic) | |
| O-Ring | (o-ring) | EPDM alternativ NBR, VITON | |
| Motor | (motor) | 230 V, 1 Ph, 50-60 Hz | 110 V, 1 Ph, 50-60 Hz |
| Leistung | (motor capacity) | 57 Watt (Input) / 10 Watt (Output) | |
| Schutzart | (protection category) | IP 22 | |
| Gesamtgewicht | (total weight) | ~ 1,8 kg | |

Achtung: Die Pumpen sind nicht selbstansaugend und nicht für Trockenlauf geeignet.

Attention: These magnetically pumps are designed for use with clean fluids. Solids will cause jamming. Abrasives will reduce pump live and invalidate the warranty. The pumps are not designed to run dry.

Zentrifugalpumpe mit Magnetskupplung Magnetically coupled centrifugal pump NDP 25/2

Einzelteile:



| Typ | Pos. | Beschreibung | | Stück | Artikel-Nr. | Ausführung |
|----------|---------|----------------|------------------------|----------|-------------|------------|
| Type | Item no | Description | | Quantity | Part no. | Version |
| NDP 25/2 | 1 | Motor | Motor | 1 | - | |
| NDP 25/2 | 2 | Lüfterrad | Fan | 1 | 033322 | |
| NDP 25/2 | 3 | Motorgehäuse | Motor Cover | 1 | 013314 | |
| NDP 25/2 | 4 | Schraube | Screw | 2 | 001739 | |
| NDP 25/2 | 5 | Antriebsmagnet | Drive Magnet | 1 | 023267 | |
| NDP 25/2 | 6 | Spindelgehäuse | Spindle Housing | 1 | 003271 | |
| NDP 25/2 | 7 | O-Ring | O-ring | 1 | 013291 | EPDM |
| | | | | | 003265 | Viton |
| | | | | | 003224 | Nitrile |
| NDP 25/2 | 8 | Flügelrad | Impeller | 1 | 013268 | |
| NDP 25/2 | 9 | Pumpengehäuse | Pump Body | 1 | 013333 | Ø 21mm PP |
| | | | | | 013334 | ½" BSP PP |
| | | | | | 033225 | ½" BSP PPS |
| NDP 25/2 | 10 | Schraube | Screw | 4 | 001095 | |