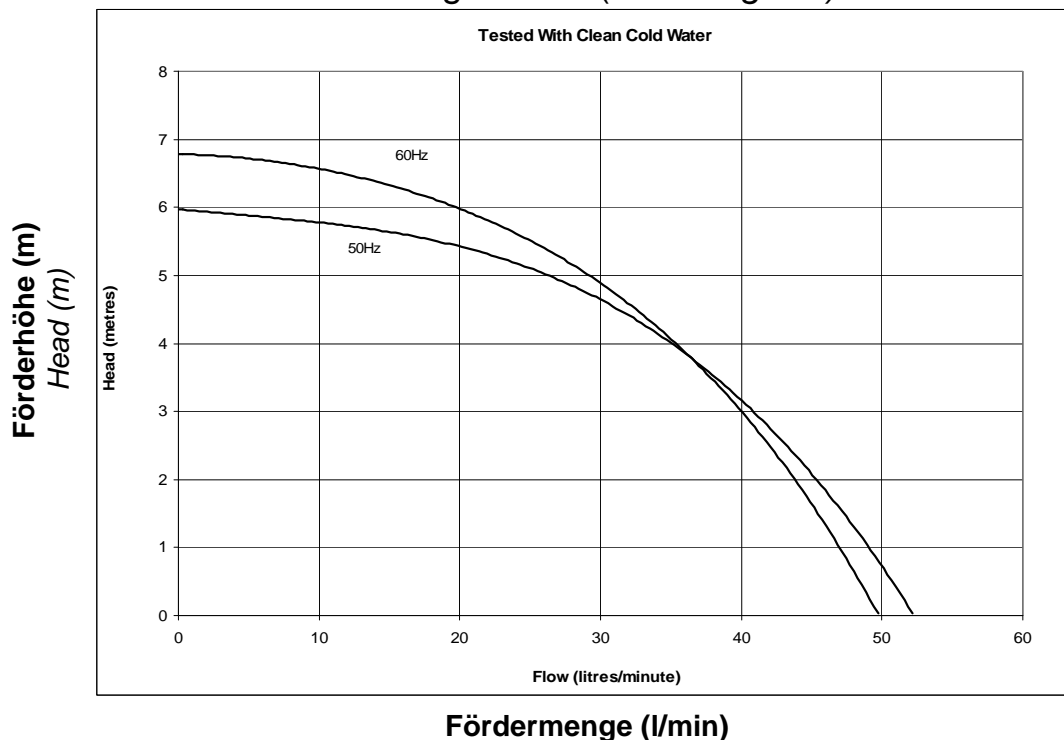


Zentrifugalpumpe mit Magnetkupplung Magnetically coupled centrifugal pump NEMP 50/7



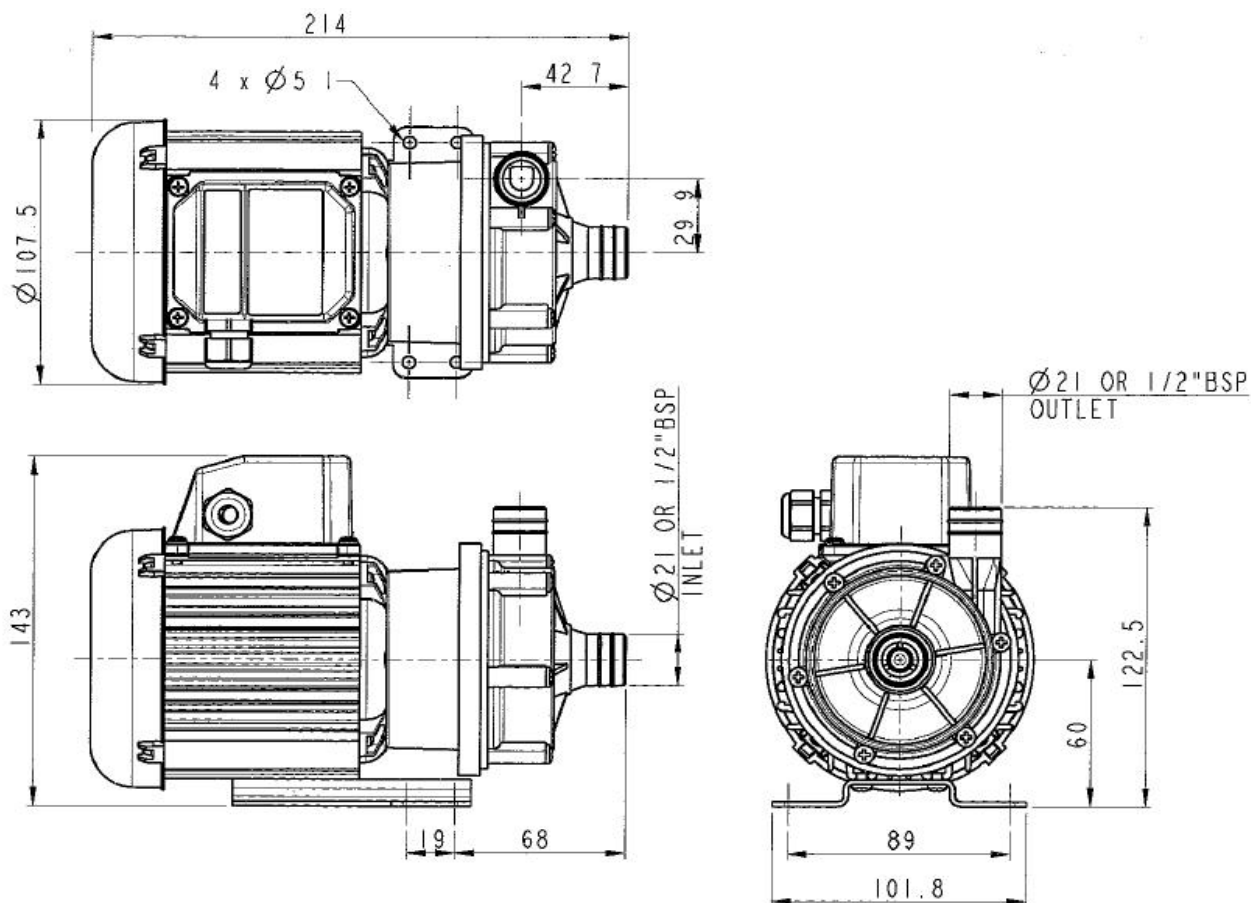
Leistungskurve* (load diagram)*



| Typ Type | Volt | Ph | Hz | Saugstutzen inlet port | Druckstutzen discharge side | Artikel-Nr. PP Item number | Artikel-Nr. PPS Item number |
|-------------|------|----|----|---------------------------|--------------------------------|-------------------------------|--------------------------------|
| NEMP 50/7 | 230 | 1 | 50 | Ø 21mm glatt (plain) | Ø 21mm glatt (plain) | 106904 | |
| NEMP 50/7 | 230 | 1 | 50 | ½" BSP AG (M) | ½" BSP AG (M) | 106932 | |
| NEMP 50/7 | 230 | 1 | 60 | Ø 21mm glatt (plain) | Ø 21mm glatt (plain) | 106926 | |
| NEMP 50/7 | 230 | 1 | 60 | ½" BSP AG (M) | ½" BSP AG (M) | 116951 | |
| NEMP 50/7 | 110 | 1 | 50 | Ø 21mm glatt (plain) | Ø 21mm glatt (plain) | 106957 | |
| NEMP 50/7 | 110 | 1 | 50 | ½" BSP AG (M) | ½" BSP AG (M) | 106955 | |
| NEMP 50/7 | 110 | 1 | 60 | Ø 21mm glatt (plain) | Ø 21mm glatt (plain) | 186914 | |
| NEMP 50/7 | 110 | 1 | 60 | ½" BSP AG (M) | ½" BSP AG (M) | 216954 | |

* Die Leistungskurve wurde mit Wasser bei 20°C ermittelt * Performance tested with clean cold water @ 20°C

Zentrifugalpumpe mit Magnetkupplung Magnetically coupled centrifugal pump NEMP 50/7



Technische Daten (Technical data) NEMP 50/7

| | | | |
|-------------------|--------------------------------|--|-----------------------|
| max. Fördermenge | (discharge rate) | 50 l/min (50Hz) | 52 l/min (60Hz) |
| max. Förderhöhe | (delivery head) | 6,0 m (50Hz) | 6,8 m (60Hz) |
| Temperaturbereich | (temperature range) | -20...+85°C (PP) | -20...+95°C (PPS) |
| max. Dichte | (max. specific gravity) | 1,2 Kg/dm ³ @ max. 30 mPa s | |
| Gehäusedruck | (pump casing pressure) | 1,4 bar | |
| Saugstutzen | (inlet port) | 1/2" BSP AG (M) | Ø 21 mm glatt (plain) |
| Druckstutzen | (discharge side) | 1/2" BSP AG (M) | Ø 21 mm glatt (plain) |
| Gehäusematerial | (pump casing material) | PP | PPS |
| Flügelrad | (impeller) | PP | PPS |
| Welle | (spindle material) | Keramik (Ceramic) | |
| O-Ring | (o-ring) | EPDM alternativ NBR, VITON | |
| Motor | (motor) | 230 V, 1 Ph, 50Hz | 230 V, 1 Ph, 60 Hz |
| | | 110 V, 1 Ph, 50 Hz | 110 V, 1 Ph, 60 Hz |
| Leistung | (motor capacity) | 95 Watt | |
| Schutzart | (protection category) | IP X5 | |
| Gesamtgewicht | (total weight) | ~ 3,0 kg | |

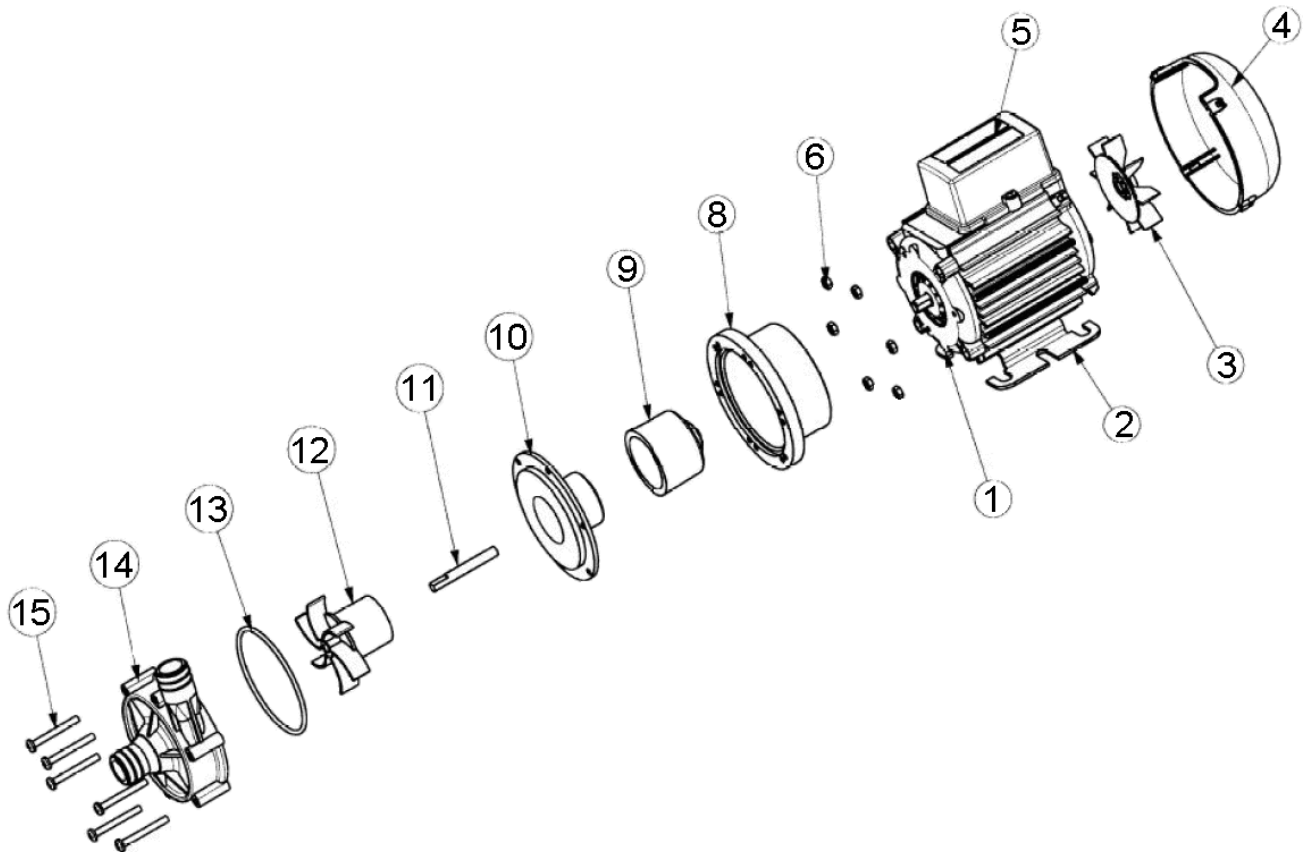
Achtung: Die Pumpen sind nicht selbstansaugend und nicht für Trockenlauf geeignet.

Attention: These magnetically pumps are designed for use with clean fluids. Solids will cause jamming. Abrasives will reduce pump live and invalidate the warranty. The pumps are not designed to run dry.

Zentrifugalpumpe mit Magnetkupplung

Magnetically coupled centrifugal pump

NEMP 50/7



| Typ | Pos. | Beschreibung | Description | Stück | Artikel-Nr. | zusätzl. Angaben |
|-----------|------|-----------------|------------------------|-------|-------------|------------------|
| NEMP 50/7 | 1 | Motor | <i>Motor</i> | 1 | 116842 | 230 V |
| | | | | | 116875 | 110 V |
| NEMP 50/7 | 2 | Montagefuß | <i>Mounting Foot</i> | 1 | 036329 | |
| NEMP 50/7 | 3 | Lüfterrad | <i>Fan</i> | 1 | 001577 | |
| NEMP 50/7 | 4 | Lüfterabdeckung | <i>Fan Cowl</i> | 1 | 036085 | |
| NEMP 50/7 | 5 | Anschlusskasten | <i>Terminal Box</i> | 1 | 036028 | |
| NEMP 50/7 | 6 | Mutter | <i>Nut</i> | 6 | 032105 | |
| NEMP 50/7 | 8 | Laterne | <i>Adaptor</i> | 1 | 036324 | |
| NEMP 50/7 | 9 | Antriebsmagnet | <i>Drive Magnet</i> | 1 | 006287 | |
| NEMP 50/7 | 10 | Spindelgehäuse | <i>Spindle Housing</i> | 1 | 016311 | |
| NEMP 50/7 | 11 | Spindel | <i>Spindle</i> | 1 | 006244 | |
| NEMP 50/7 | 12 | Flügelrad | <i>Impeller</i> | 1 | 016355 | 50Hz |
| | | | | | 026215 | 60Hz |
| NEMP 50/7 | 13 | O-Ring | <i>O-Ring</i> | 1 | 013290 | EPDM |
| | | | | | 021056 | Viton |
| | | | | | 003398 | Nitrile |
| NEMP 50/7 | 14 | Pumpengehäuse | <i>Pump Body</i> | 1 | 016358 | Ø 21mm PP |
| | | | | | 016366 | Ø 21mm PPS |
| | | | | | 016360 | 1/2" BSP PP |
| | | | | | 016368 | 1/2" BSP PPS |
| NEMP 50/7 | 15 | Schraube | <i>Screw</i> | 6 | 022115 | |